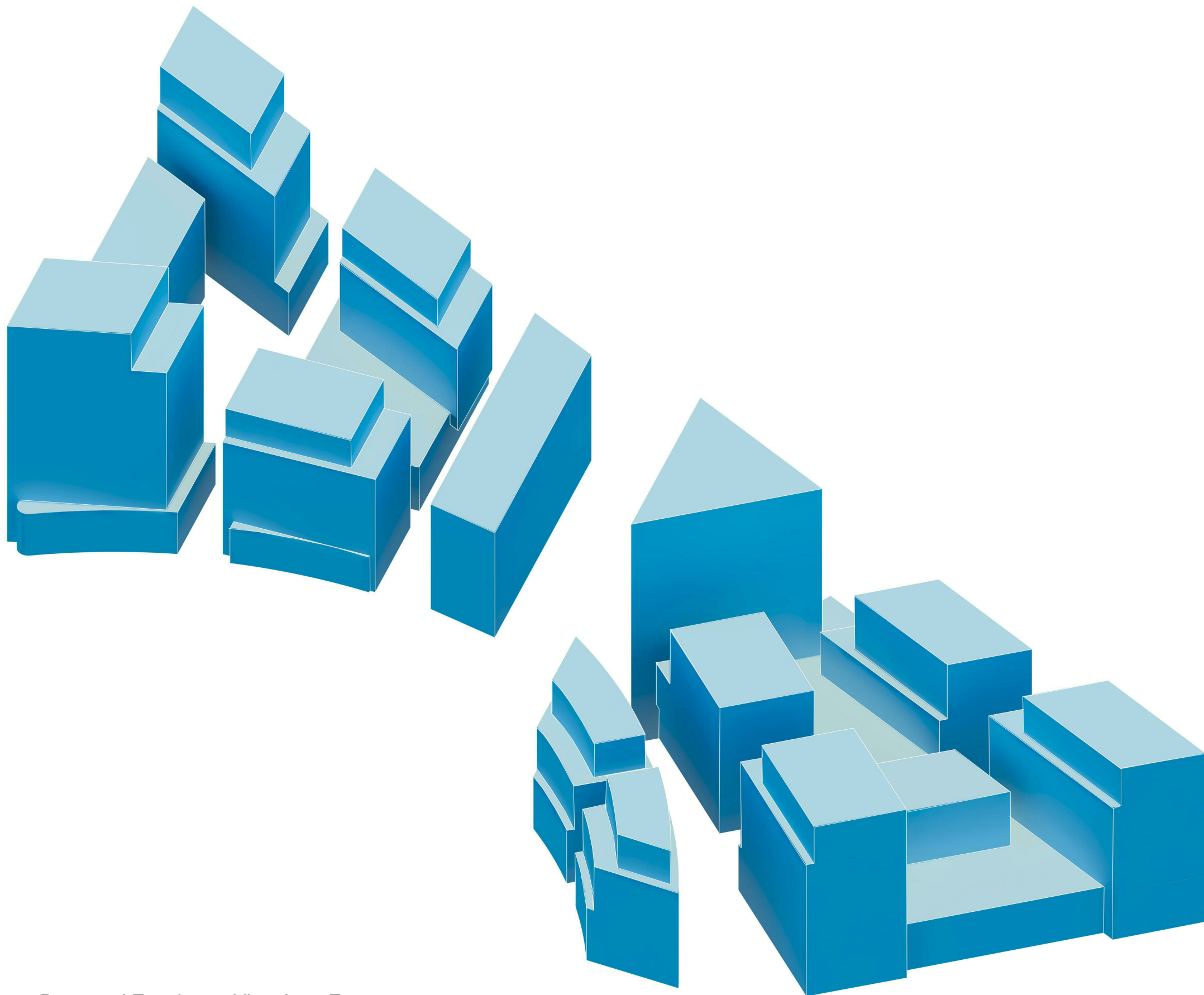
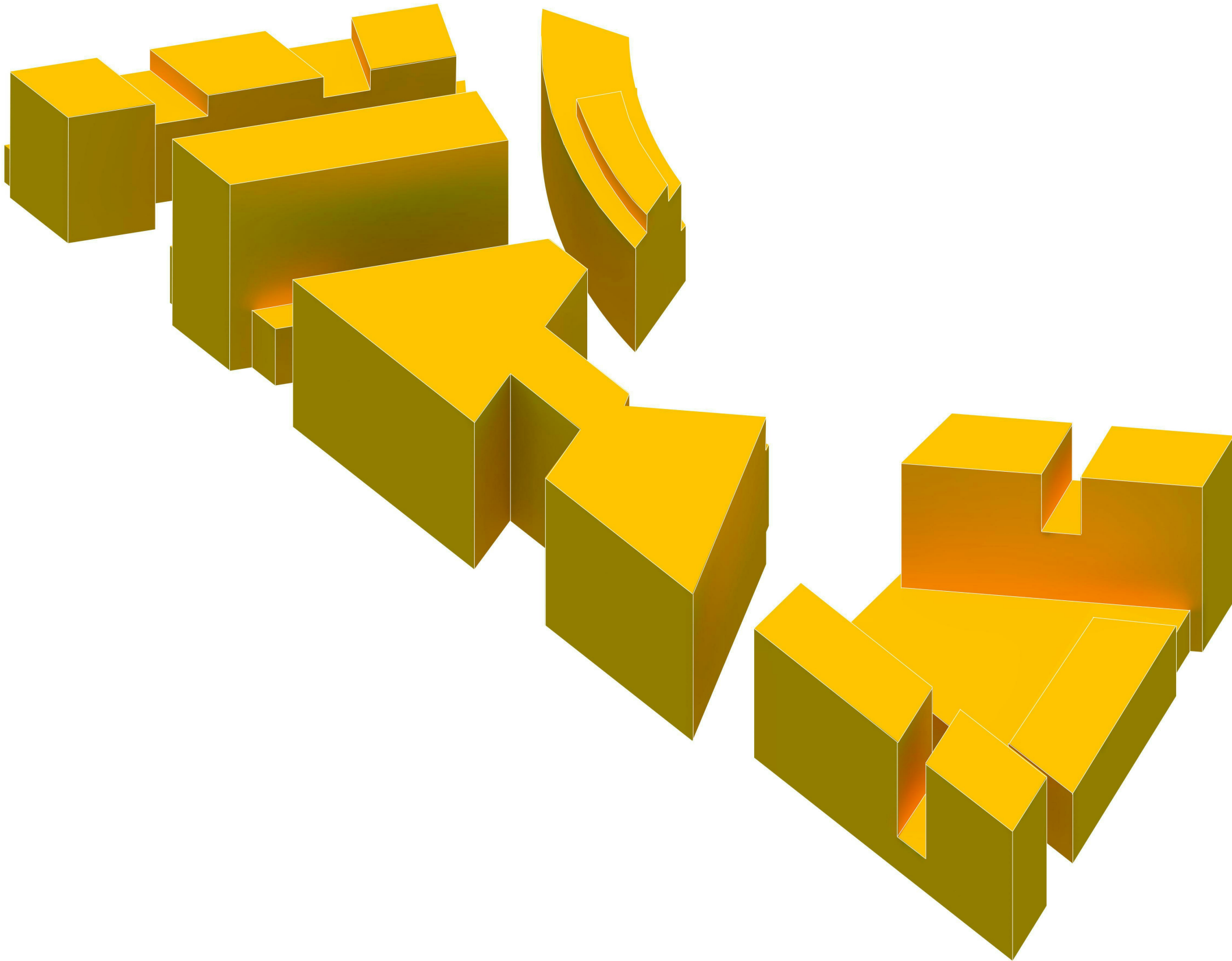


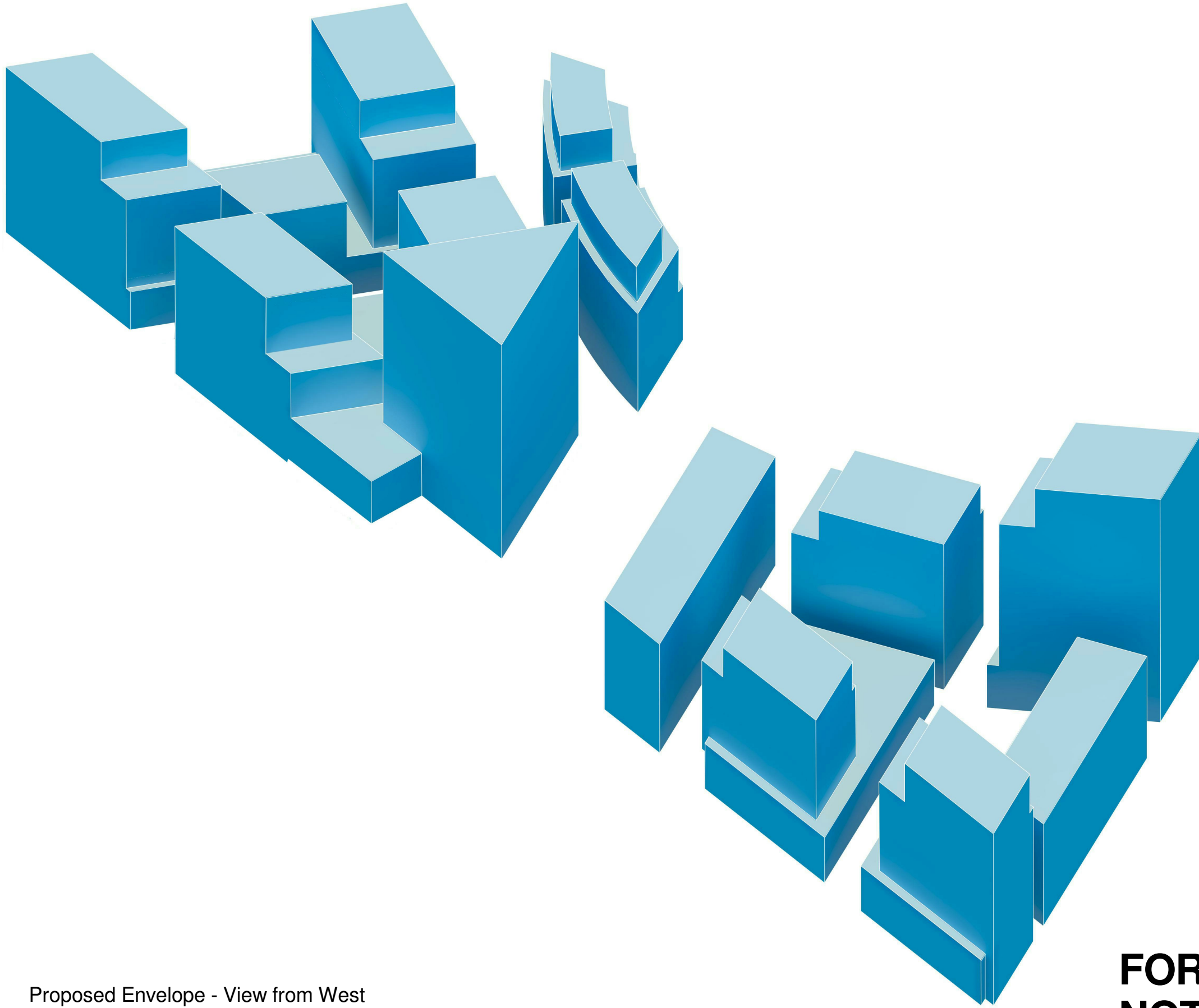
Approved Masterplan (DA 500/01) Envelope - View from East



Proposed Envelope - View from East



Approved Masterplan (DA 500/01) Envelope - View from West



Proposed Envelope - View from West

**FOR INFORMATION
NOT FOR APPROVAL**



KEY:

Approved Masterplan (DA 500/01) Envelope

Proposed Building Envelope

Discovery Point, Wolli Creek
Concept Plan

Comparison with Approved
Masterplan DA500/01

Check all dimensions and site conditions prior to commencement of any work, the purchase or ordering of any materials, fittings, plant, services or equipment and the preparation of shop drawings and or the fabrication of any components.

Do not scale drawings - refer to figured dimensions only. Any discrepancies shall immediately be referred to the architect for clarification.

All drawings may not be reproduced or distributed without prior permission from the architect.

Scale	NTS	@ A1
Drawn	AW	Checked MA
Project no.	S11191	
Status	PLANNING	
Plot Date	15/06/2010 4:16:56 PM	
Plot File	C:\TEMP\masterplan-discovery-100129_Central_Amy Watkins - S1118.rvt	
Drawing no.	DA7-001	Revision A

Sydney 1/243 Liverpool Street
East Sydney NSW 2010 Australia
T 02 8354 5100 F 02 8354 5199
email syd@batesmart.com.au
http://www.batesmart.com.au

Melbourne 1 Nicholson Street
Melbourne VIC 3000 Australia
T 03 8664 6200 F 03 8664 6300
email mel@batesmart.com.au
http://www.batesmart.com.au

Bates Smart Pty Ltd ABN 70 004 999 400

BATESSMART™